



Celebrating 100 Years of **DEMOCRACY** ★ IN ACTION! ★



Wade
Hampton Earle
1925-1932



Jacob Philip
'Jake' Blakeslee
1932-1943



Zola C. Blakeslee
1943-1964



Isabel Evans Smith
1964-1972



Sandra J. Randolph
1972-1977



Peggy S. Robbins
1977-2005



Vicki Davis
2005-present

★ pictures
not available



Fiscal Year Report 2024-2026

772-288-5637 | MartinVotes.gov

135 SE Martin Luther King, Jr. Blvd. | Stuart, FL | elections@MartinVotes.gov



A MESSAGE FROM Vicki Davis

Martin County Supervisor of Elections

As we proudly pay tribute to 100 years of democracy in action in Martin County, it is both an honor and a privilege to reflect on the enduring strength of our electoral process.

I would like to take a moment to honor the six Supervisors of Elections who served the voters of Martin County prior to my assuming office in 2005. Each supervisor demonstrated their dedication as a gatekeeper of the democratic process. Their leadership, integrity, and service laid the foundation for the work we continue today. From the days of lever machines to today's secure paper ballot system, our election process has evolved dramatically. These advancements have made voting more efficient, accurate, and accessible for all. The heart of the process has remained constant through the belief that every voice matters and every vote counts.

As we celebrate this centennial, let us carry forward the legacy of those who safeguarded our electoral process and continue to build a future where participation remains strong, where trust is earned, and the democratic spirit endures for generations to come.

With pride in our past and a commitment to our future,

Vicki Davis, Martin County's 7th Supervisor of Elections

HONORING A HISTORIC CENTURY IN ELECTIONS!

1925

Wade Hampton Earle became the first Registrar of Elections

1938

The number of registered voters reached 1,880

1943

Zola Blakeslee was appointed as the first woman to serve as Supervisor of Registration

1977

Peggy Robbins became the longest-serving Supervisor of Elections, first appointed by Governor Askew in 1977

1980

The number of registered voters grew to 38,763

2002

Martin County changed voting equipment from lever machines to electronic touchscreens

2004

Vicki Davis was elected as the 7th Supervisor of Elections

2005

The Elections Office moved to 135 SE Martin Luther King, Jr. Blvd. in Stuart - bringing all operations under one roof

2008

Voting equipment transitioned to optical scanners with paper ballots

2020

The year of COVID, Martin County had an impressive 84% voter turnout in the general election

2024

Martin County had the 10th highest voter turnout in Florida for the general election

2025

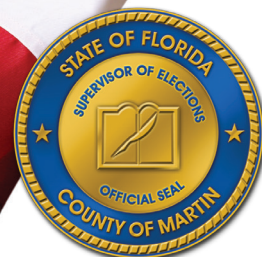
Issued our first fiscal year report

The Seven Gatekeepers

of Democracy!

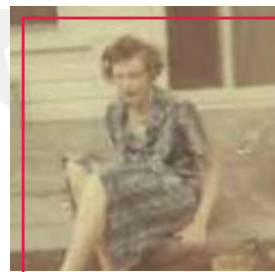
Wade Hampton Earle

Wade Hampton Earle (W.H. Earle), Martin County's first Registrar of Elections. Appointed by Florida's Governor, Mr. Earle served from 1925-1932. Having laid the foundation of dedicated service for the voters of Martin County, Mr. Earle's legacy of safeguarding the voting process continues to be a vital part of our local election history.



Jacob Philip 'Jake' Blakeslee

Supervisor Jacob P. Blakeslee registered to vote on November 14, 1923, and later served as the county's second Supervisor of Registration from 1932 to 1943.



Zola C. Blakeslee

Zola Blakeslee was the county's third Supervisor of Registration. Following the resignation of her husband, Jacob Blakeslee, in 1943, Zola Blakeslee was appointed by Florida Governor Spessard Holland to carry on the important work of overseeing elections in Martin County. She was re-elected and served for 22 years.



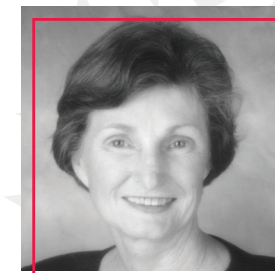
Isabel Evans Smith

Isabel Evans Smith was our fourth Supervisor of Registration. Supervisor Smith faithfully served the voters of Martin County from 1964 to 1972 continuing the tradition of integrity and dedication in the electoral process.



Sandra J. Randolph

Sandra J. Randolph was the county's fifth Supervisor of Registration. Supervisor Randolph served the voters of Martin County from 1972 to 1977, contributing to the county's rich voting history.



Peggy S. Robbins

Peggy Robbins was Martin County's longest serving Supervisor of Elections to date. Supervisor Robbins was appointed in 1977 by Florida Governor Reubin Askew and remained in office until retiring in 2005. Supervisor Robbins served the voters of Martin County for 28 years from 1977 to 2005. Her legacy of dedication and integrity continues to inspire the work of the Supervisor of Elections office today. We honor her remarkable service as a vital part of shaping democracy and Martin County's centennial story.



Vicki Davis

Vicki Davis is Martin County's seventh and current Supervisor of Elections. Since taking office in 2005 Supervisor Davis has led the county through significant advancements in election technology including the transition from electronic voting equipment to a secure, paper-based voting system. Her dedication to transparency, accuracy, and voter confidence has continued Martin County's proud tradition of safe and secure elections.

We honor these election officials for their commitment to serve as the gatekeeper of the democratic process for all voters in Martin County over the past 100 years.

Voter Registration

SUMMARY

MARTIN COUNTY, FL

YEAR	# OF PRECINCTS	DEMOCRATS	REPUBLICANS	OTHER	TOTAL REGISTERED VOTERS
1938	8	1,800	80	0	1,880
1940	8	2,300	80	0	2,380
1942	8	2,200	75	0	2,275
1944	8	2,685	68	0	2,753
1946	Unknown	2,946	91	0	3,037
1948	Unknown	Unknown	Unknown	Unknown	Unknown
1950	Unknown	3,266	79	0	3,345
1952	Unknown	4,554	84	0	4,368
1954	Unknown	4,722	100	0	4,822
1956	Unknown	5,385	364	0	5,749
1958	Unknown	5,187	536	0	5,723
1960	13	6,961	933	6	7,900
1962	14	7,238	1,338	12	8,588
1963	14	7,509	1,441	25	8,975
1964	15	9,058	1,889	49	10,996
1965	15	8,690	1,949	68	10,707
1966	17	8,593	2,055	69	10,717
1967	17	7,706	2,215	86	10,007
1968	17	9,101	3,283	167	12,551
1969	17	9,106	3,449	176	12,731
1970	17	9,078	4,388	305	13,771
1971	17	9,519	4,937	454	14,910
1972	18	10,802	7,685	988	19,475
1974	18	11,936	10,393	1,510	23,739
1975	18	11,491	10,528	1,189	23,208
1976	20	13,426	12,738	1,516	27,680
1978	29	15,062	14,378	1,748	31,188
1980	29	17,477	18,828	2,458	38,763
1981	29	15,106	18,284	2,353	35,743
1982	27	16,806	20,666	2,678	40,150
1983	27	16,285	20,732	2,531	39,548
1984	28	18,108	25,915	2,931	46,954
1985	28	16,622	25,604	2,775	45,001
1986	28	17,759	28,188	3,120	49,067
1987	29	15,411	26,531	2,883	44,825
1988	29	17,329	32,088	3,608	50,025

YEAR	# OF PRECINCTS	DEMOCRATS	REPUBLICANS	OTHER	TOTAL REGISTERED VOTERS
1989	30	16,198	31,697	3,502	51,397
1990	30	17,278	34,613	4,030	55,921
1991	32	16,470	33,655	4,102	54,227
1992	32	19,011	40,002	5,035	64,048
1993	33	18,865	39,005	5,186	62,876
1994	34	19,626	41,424	5,676	66,726
1995	35	20,212	41,979	7,500	69,691
1996	35	21,375	45,667	9,707	76,749
1997	39	21,685	45,866	11,118	78,669
1998	39	21,943	46,383	12,222	80,548
1999	39	22,250	46,258	13,239	81,747
2000	40	23,243	48,046	15,225	86,514
2001	42	23,744	48,206	16,158	88,108
2002	46	24,690	49,328	17,345	91,363
2003	49	24,716	49,351	17,478	91,545
2004	49	27,252	51,912	19,804	98,968
2005	49	27,641	52,416	20,319	100,376
2006	53	27,559	50,931	20,975	99,465
2007	53	25,846	47,432	20,072	93,350
2008	52	29,269	50,463	21,442	101,174
2009	52	28,865	48,827	21,562	99,254
2010	46	28,779	49,766	22,731	101,276
2011	31	27,767	48,724	22,820	99,311
2012	31	27,003	51,710	23,121	101,834
2013	31	27,137	51,842	23,513	102,492
2014	31	27,008	51,937	25,509	104,454
2015	31	27,348	52,378	26,602	106,328
2016	30	27,955	55,496	27,482	110,933
2017	30	28,152	55,730	27,860	111,742
2018	30	28,841	56,947	28,732	114,520
2019	28	27,632	55,001	27,994	110,627
2020	28	30,497	59,186	29,882	119,565
2021	28	30,587	59,385	30,125	120,097
2022	27	28,308	57,834	29,935	116,077
2023	27	25,679	58,671	29,013	113,363
2024	28	25,407	62,753	29,659	117,819

Primary Election 2024



TOTAL BALLOT CAST

31,768



BY MAIL

14,260



EARLY VOTED

4,247



ELECTION DAY

13,261

General Election 2024



TOTAL BALLOT CAST

99,481



BY MAIL

28,727



EARLY VOTED

50,934

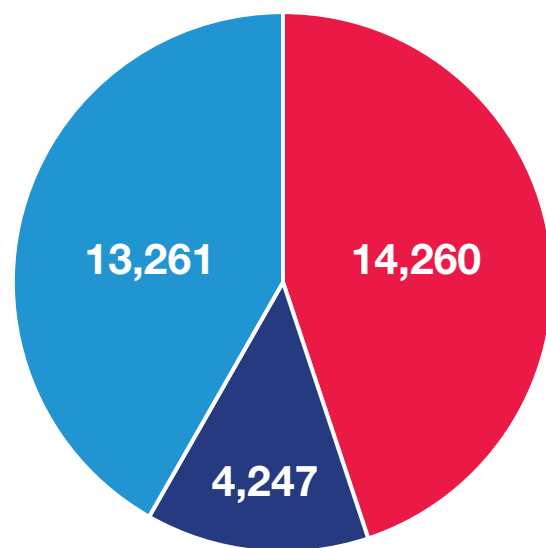


ELECTION DAY

19,820

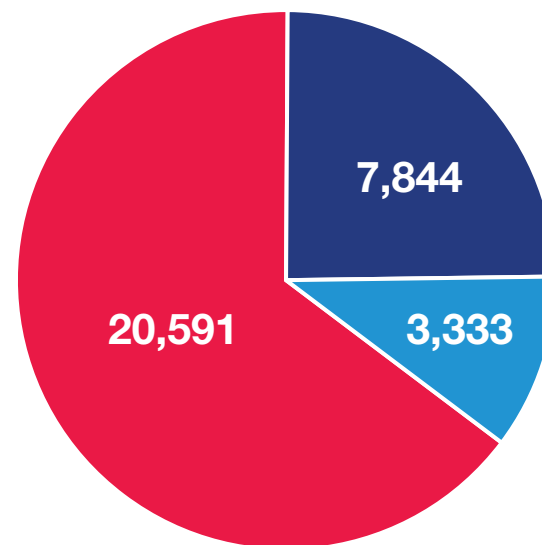
85.2%
10TH HIGHEST
TURNOUT IN
THE STATE OF
FLORIDA

METHODS OF VOTING



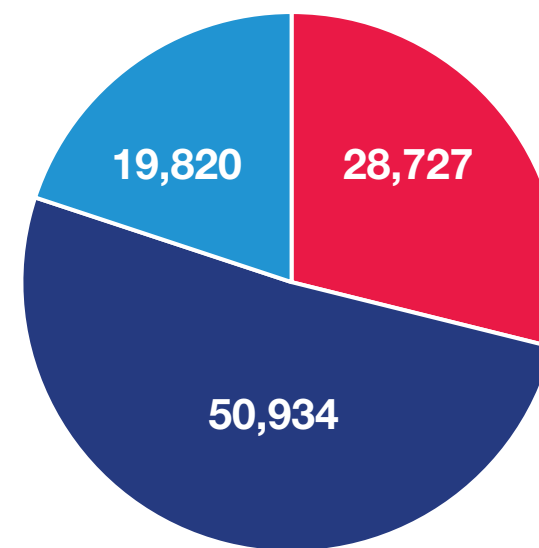
■ Vote by Mail
■ Early
■ Election Day

VOTES CAST BY
EACH PARTY



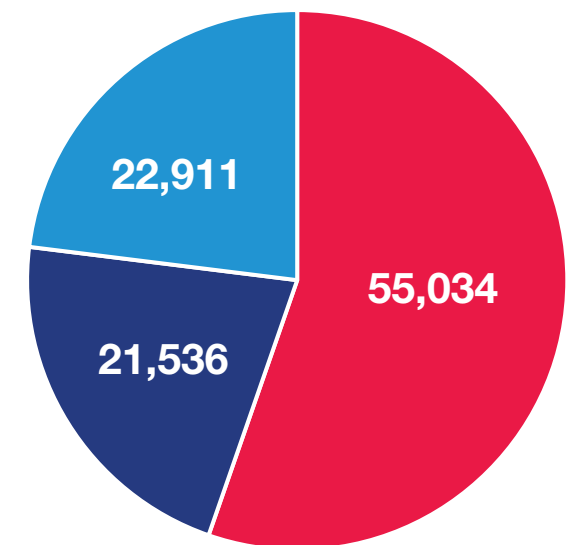
■ Republican
■ Democrat
■ Other

METHODS OF VOTING



■ Vote by Mail
■ Early
■ Election Day

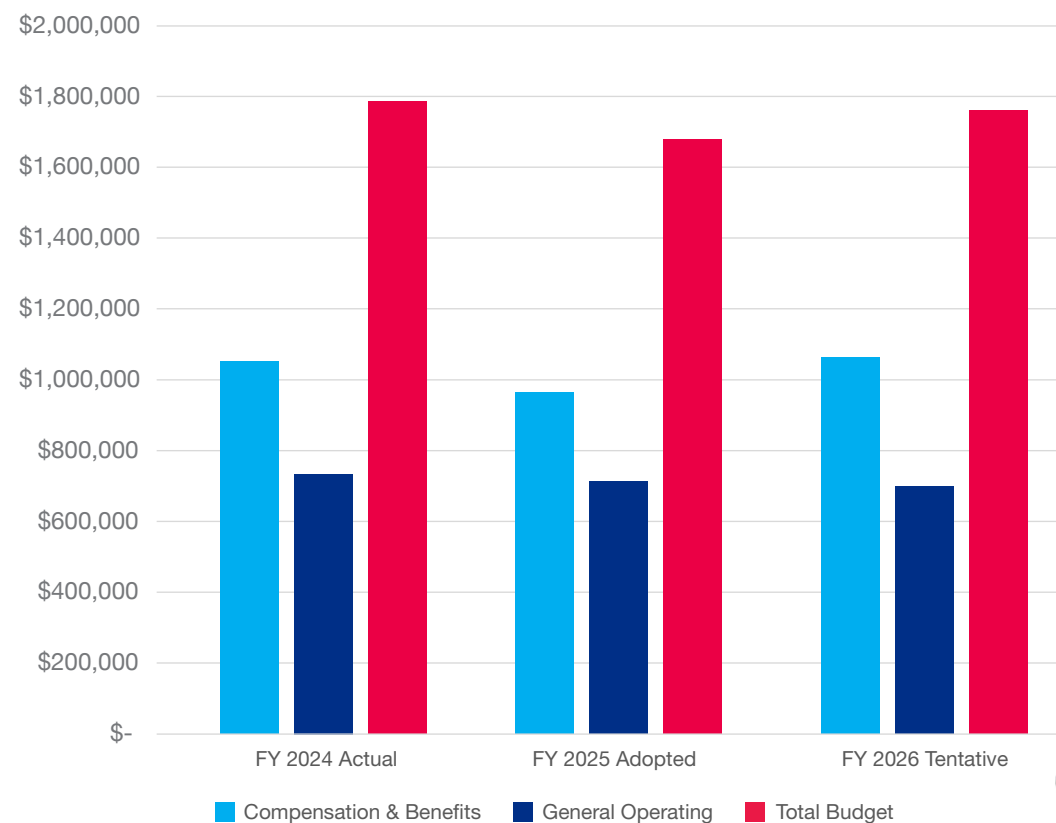
VOTES CAST BY
EACH PARTY



■ Republican
■ Democrat
■ Other

Budget 2024-26

	FY 2024 ACTUAL	FY 2025 ADOPTED	FY 2026 TENTATIVE
Compensation & Benefits	1,051,481	964,333	1,063,070
General Operating	734,308	713,312	698,004
TOTAL	1,785,789	1,677,645	1,761,074



Voting Equipment Replacement Reserve
\$540,672 ▶



Award-Winning Partnerships

**WITH MARTIN COUNTY
TELEVISION (MCTV)**

Martin County's Supervisor of Elections is dedicated to the mission of providing exceptional service to the voters of the county through creative and innovative methods.

By partnering with MCTV the elections office has been able to develop a variety of educational videos to ensure election workers are prepared to meet voters' needs when early voting or casting their votes at a precinct. Two award-winning videos were produced and filmed by the talented MCTV staff. These videos were created to assist with the training of election workers.



Election Worker Sensitivity Training Award

The Martin County Supervisor of Elections Office was recently honored with two national awards plus a People's Choice Award for the creation of a video for election workers focused on sensitivity training. The awards were granted by the national Election Center located in Katy, Texas, and the U.S. Elections Assistance Commission.

This training video was made possible through a partnership with Martin County's MCTV who produced and recorded the video with Suzy Hutchinson, former Executive Director of Helping People Succeed (HPS), and Trisha Overton, a client of HPS who provided valuable tips and best practices for election workers.

Registering to Vote and Casting Your Vote with American Sign Language

By collaborating with Robin Peterson, a certified American Sign Language (ASL) interpreter, and Martin County Television (MCTV) two unique videos were produced to demonstrate the voter registration process and the steps for casting a vote through sign language.



Milestones in Schools' Civic Engagement Programs

Voter Outreach Partnerships in the Community!

As we celebrate our 100-year centennial, we acknowledge that the future of the democratic process is rooted in our "future" voters. The Supervisor of Elections is dedicated to educating and engaging with school-aged students through partnerships with the Martin County School District and the local business community.

Over the years, we have worked diligently to build and cultivate these partnerships, which have transformed our civic engagement efforts. Our programs have evolved from basic initiatives to civic programs that not only inspire our future voters but also rekindle civic pride among our current active voters creating a stronger foundation for generations to come.

Middle School Chick-fil-A Contest

A middle school patriotic poster contest has been possible through a long-standing partnership with Chick-fil-A. Prior to an election year, middle school students are encouraged to create a non-partisan but patriotic piece of artwork to encourage voter participation. The artwork has been placed on display at Chick-fil-A throughout the election cycle and the 1st, 2nd and 3rd place artists receive a cow trophy and Chick-fil-A memorabilia. This contest has not only inspired our artistic students but has also reinforced the importance of participation in the election process when they become eligible to register to vote.

I Voted Stickers & Future Voter Stickers Program

The 'I Voted' sticker program was initiated to engage future voters in the electoral process by encouraging them to design and create a sticker that incorporates elements unique to Martin County, providing a sense of local patriotic pride among our voters. Over the past three years, this initiative has gained significant traction with both elementary and high school students, receiving positive feedback from our voters. This 'I Voted' sticker program is sponsored by Attorney Gary S. Lesser, Managing Partner of Lesser, Landy, Smith & Siegel, PLLC.

Color Me Patriotic

Color Me Patriotic is an art contest for high school students to share their perception of democracy on canvass. Even though these students aren't old enough to cast a vote, this art contest allows them to have a voice in the election process. The winning artwork is on display at the Elections Office to provide voters a snapshot of the elections process through the eyes of "our" students. This art contest is sponsored by Attorney Gary S. Lesser, Managing Partner of Lesser, Landy, Smith & Siegel, PLLC since 2014.



The mission of the Supervisor of Elections is to enhance public confidence, encourage citizen participation, and to increase voter awareness and education for citizens of all ages.

As your trusted source for all election information, we continue to look for opportunities to provide voter drives; equipment demonstrations; and presentations to build excitement and awareness about the election process. Voters are encouraged to let their voice be heard through their vote!



Traffic Message Boards

Through partnerships with Martin County, the City of Stuart, and the Martin County Sheriff's Department, digital traffic message boards are strategically placed throughout the county displaying messages which include registration deadlines, early voting dates and times, and reminders to renew vote-by-mail requests. This outreach has directly contributed to increased voter engagement and participation.

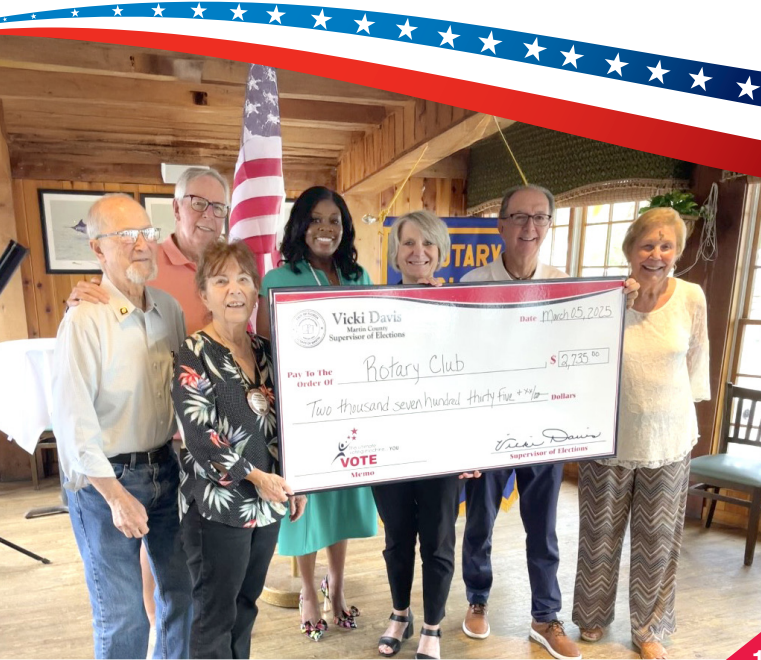
Touring Your Election Office

Citizens and groups are encouraged to call the Elections Office to schedule a tour. These informational tours provide voters the opportunity to see and experience what it takes to cast a vote. Meet the elections team and learn about the important work that goes on behind the scenes to secure your vote. Call 772-288-5637 to schedule a tour.

Election Heroes

Adopt-A-Precinct

Adopt-A-Precinct is a partnership in which a participating organization adopts a specific precinct for an election cycle and provides the necessary personnel needed to work that precinct. At the same time, the organization is raising unrestricted funds for a worthy cause and taking an active role in the democratic process. In turn, the Supervisor of Elections writes a check to the entity specified by the organization rather than paying each individual worker. The program is a win-win for both the elections office and the partnering organization. During the 2024 elections four local non-profit organizations adopted polling precincts raising a combined \$10,730.00 for the 2024 election cycle.



Election Workers

During elections, the Martin County Elections Office utilizes six early voting locations and 28 polling precincts, all staffed by civic-minded individuals who ensure smooth operations while serving voters. During the 2024 election cycle over 150 dedicated registered voters stepped up to serve as election workers providing an invaluable service to the voters of Martin County. These election heroes are the heartbeat of the process and help to maintain free and fair elections for all voters.



2026 NOTICE OF ELECTIONS

Florida is a Closed Primary State:

- ★ In a primary election, you are entitled to vote the official primary election ballot of the political party you are registered with and no other, FS 101.021.
- ★ You must be registered with your party of choice 29 days before a primary election, FS 97.055.
- ★ At the general election you may vote for any candidate or question on the ballot, regardless of party affiliation.

Primary Election

★	July 20 Book Closing	Deadline to make Party Changes & Register to Vote
	July 9 - Aug. 6 Vote by Mail	Ballots are mailed from 40 days to 10 days before an election
	August 8 - 15 Early Voting*	8am to 5pm Daily. Locations: Elections Center, Hobe Sound Library, and Elisabeth Lahti Library
	August 18 Election Day	All precincts open 7am to 7pm

General Election

★	October 5 Book Closing	Deadline to Register to Vote
	Sept. 24 - Oct.22 Vote by Mail*	Ballots are mailed from 40 days to 10 days before an election
	October 21 - 31 Early Voting*	8am to 5pm Daily. Locations: Elections Center, Hoke Library, Robert Morgade Library, Peter & Julie Cummings Library, Elisabeth Lahti Library, Hobe Sound Library
	November 3 Election Day	All precincts open 7am to 7pm

*Vote by Mail secure ballot intake stations available during Early Voting

Offices Up For Election

Federal

- ★ United States Senate
- ★ United States Representative

State

- ★ Governor & Lieutenant Governor
- ★ Attorney General
- ★ Chief Financial Officer
- ★ Commissioner of Agriculture
- ★ State Representative
District 85
District 86
- ★ Circuit Judges, 19th Circuit

County

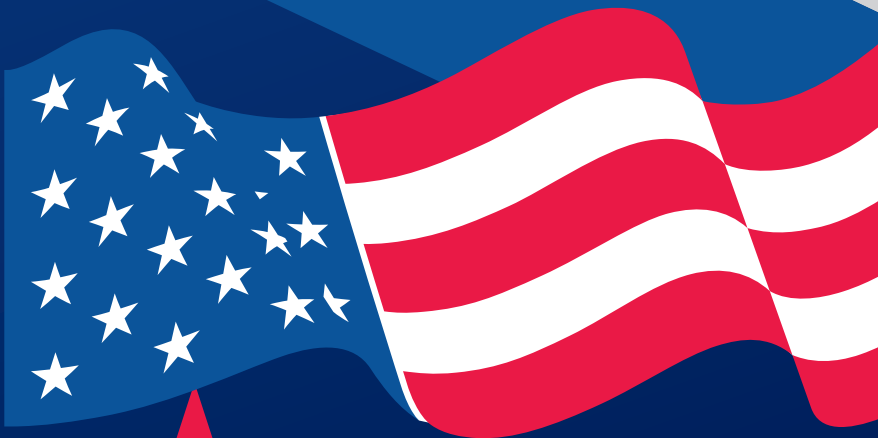
- ★ County Commissioners
District 2
District 4
- ★ School Board
District 1
District 3
District 4
- ★ County Judges

Vote by Mail requests are now being accepted for the 2026 election cycle

Check Your Voter Status!



VOTE 2026



YOUR VOTE



YOUR VOICE

PRIMARY ELECTION

August 18, 2026

Early Voting: August 8 - 15

Last Day to Register: July 20

GENERAL ELECTION

November 3, 2026

Early Voting: October 21 - 31

Last Day to Register: October 5

ATTENTION VOTERS!

Vote by Mail Requests Now Being Accepted for Elections Through 2026!



772.288.5637
MartinVotes.gov

Vote by Mail

